

## General Conditions Matrix

Maroa-Forsyth School District



4/21/2020

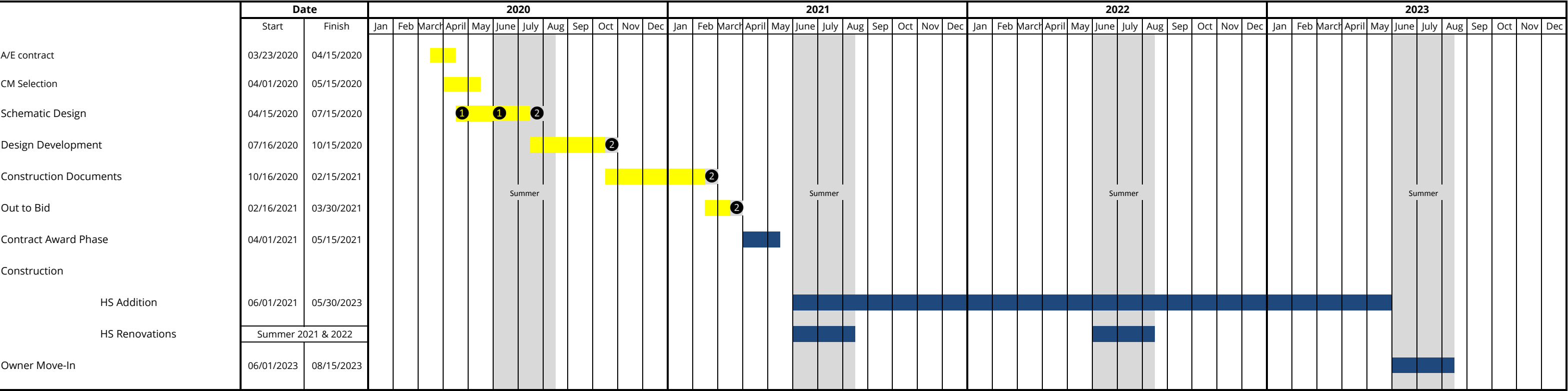
Company Name:

Item	Included in General Conditions	Included in Precon fee	Included in CM Fee	Provided by Owner	Bid Package/Trades
Administrative/accounting/clerical-jobsite based					
Groundbreaking Expenses					
Administrative/accounting/clerical-office based					
Home Office Administrative Support					
Accounting/Financial Management					
Bidding					
Electronic Distribution of Bidding Documents					
Bid Advertisement & Solicitation					
Building permits & inspection fees					
Change order administration					
Close-out documents					
As-built document creation & reproduction					
Operation and Maintenance Manuals					
Construction cleanup					
Final cleaning					
Dumpster, trash hauling & landfill charges					X
Hoisting Expenses					X
Insurance-Builders Risk				X	
Insurance and Bonds					
Performance & Payment Bond					
General Liability					
Workers Compensation					
IT equipment & services-jobsite based					
High Speed Internet Connection					
IT equipment & services-office based					
Jobsite drinking water					X
Jobsite fire prevention requirements					
Fire Extinguishers					
Jobsite supervisory personnel					
Job Superintendent					
Jobsite mobilization					
Jobsite security					
Jobsite snow removal					
Jobsite toilets					X
Jobsite - trash chutes					X
Legal fees					
Miscellaneous materials pickup & delivery					
Office equipment-jobsite based					
Office equipment-office based					
Software for budgeting, scheduling, PM, and Accounting					
Office supplies-jobsite based					
Office supplies-office based					
Office-based estimating services					
Office-based scheduling services					
Office-based project bidding services					
Bid Solicitation and Administration					
Office (home) - Building Rent					
Offsite storage					X
Postage, courier & delivery charges					
Pre-construction estimating services					
SD, DD, 50% CD, 95% CD					
Pre-construction scheduling services					
Pre-construction planning services					
Constructability Review					
Pre-construction value engineering					
Printing					X
Construction Documents (plans and specs)					X
Miscellaneous drawing reproduction					X
Project accounting services-office based					
Project management services					
Project Manager					
Project Executive					
Project Engineer					
Project quality control measures					
Progress photography					
Project signs					
Project Sign					
Temporary construction signage					
Safety program					
Personal Protective Equipment					
First Aid Supplies					
Safety Audit					
Rails, opening protection					X
Small tools & equipment					
Survey, layout & staking					
Temporary fencing and barricades					X
Temporary partitions					X
Temporary stairs					X
Temporary weather enclosures					X
Temporary jobsite telephone					
Cell phones					
Land/fax lines					
Temporary offices					
Temporary utilities - electric					
Service Fees (power company)				X	
Temporary electric service installation				X	X
Consumables					
Temporary utilities - water					
Service Fees (City)				X	
Temporary water service installation					X

Consumables				X	
Temporary utilities - Heating/Vent					
Equipment					X
Consumables					X
Installation					X
Testing & Inspections					
Testing lab services					
Trailers					
Tool					
Storage					X
Traffic control					
On site					
Off site					
All travel expenses associated with Project					
Superintendent					
Project Manager					
Project Executive					
Project Engineer					
Other G.C. Costs					
		% of Const cost			
Estimate of General Conditions:					
Preconstruction Fee					
CM Fee					
Grand Total					
Construction cost (w/out construction contingency					

Maroa-Forsyth School District - Middle School Addition (6-8)

Project Schedule  
March 18, 2020  
196EX04.400



- ① Meetings with user groups (administration, staff)
- ② Presentation to the School Board